



# MONTHLY Report

For the month of  
**December**  
**2024**



During the Reported Month, PPHI Sindh Provided the following **Free of Cost** Services

# Total Number of Health Facilities Managed by PPHI Sindh

Type of Health Facility	No. of HFs
Secondary care and RHCs	46
BHU Plus	304
MCH	21
BHU	477
Others	590
<b>Grand Total</b>	<b>1438</b>

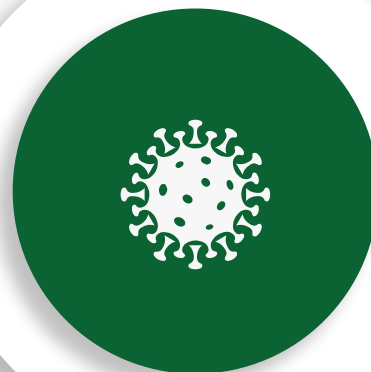


Free OPD  
Services

**3.4  
Million  
Patients**



Malnutrition Cases  
Under 5 years  
**194,192  
Treated**



Diarrhea  
Under 5 years  
**70,550**

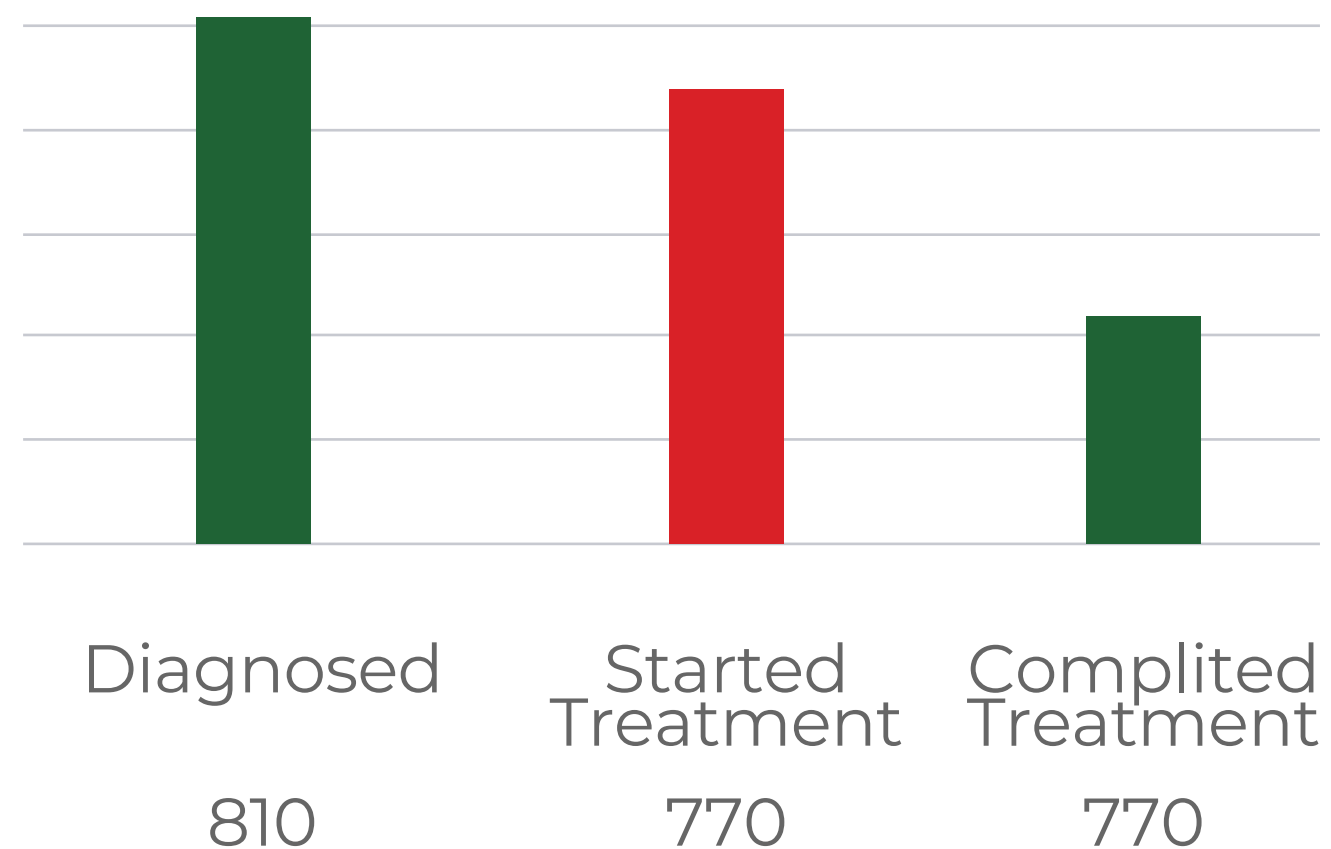


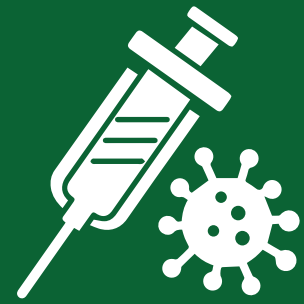
Dysentery  
Under 5 years  
**7,859**



TB  
Suspects  
**75,418**

No. of Individuals  
Suspected for TB

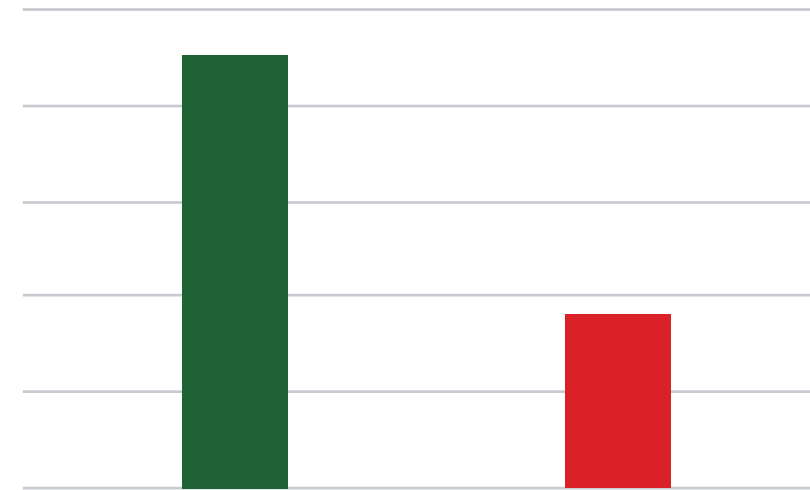




Patients  
Vaccinated For  
Hepatitis

**287,646**

No. of Individuals  
Screened for HEP B, C

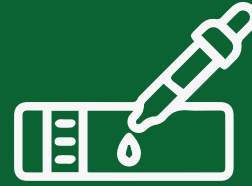


Hepatitis B	Hepatitis C
154,946	153,509



Suspected  
Malaria

**204,148**



Rapid Diagnostic  
Test (RDT)  
**190,096**



Slides examined  
**14,222**

No. of Individuals  
Tested Positive for Malaria

MP +ve



**1,708**

Slides P.  
Falciparum +ve  
**561**

Sides of P.  
Vivax +ve  
**1,147**

# Diagnostic Services, including ultrasound



1,223,895



Maternal  
Health

**423,548**



**ANC  
VISITS**

ANC-1	ANC-1 <small>Women with Hb. &lt;10 g/dl</small>	ANC - Re Visits
<b>63,748</b>	<b>28,165</b>	<b>197,506</b>

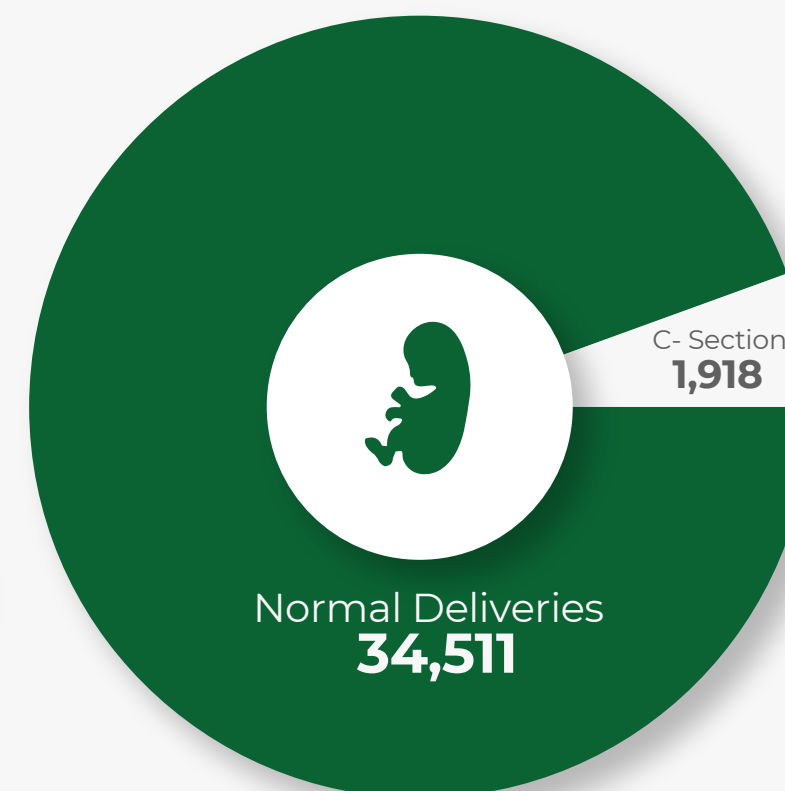


**PNC  
VISITS**

PNC-1	PNC - Rev Visits
<b>44,171</b>	<b>81,693</b>



Total Deliveries  
Conducted  
**36,429**



KMC Admissions  
**3,459**





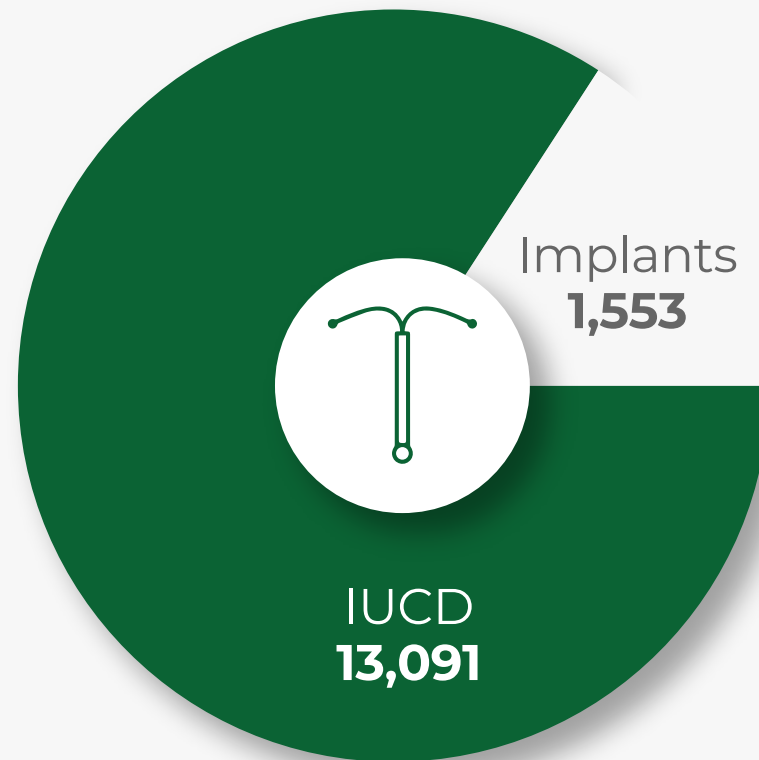
FP  
Visits  
**102,492**



LARC  
**14,644**



Immediate  
PPFP  
**12,182**



# EPI Program in Dadu and Khairpur



Total Children Fully  
Immunized

**11,010**

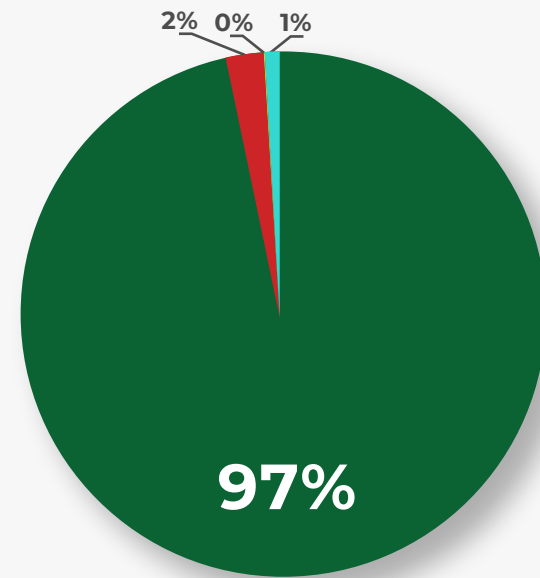


Total Birth Dose  
Vaccination

**12,360**

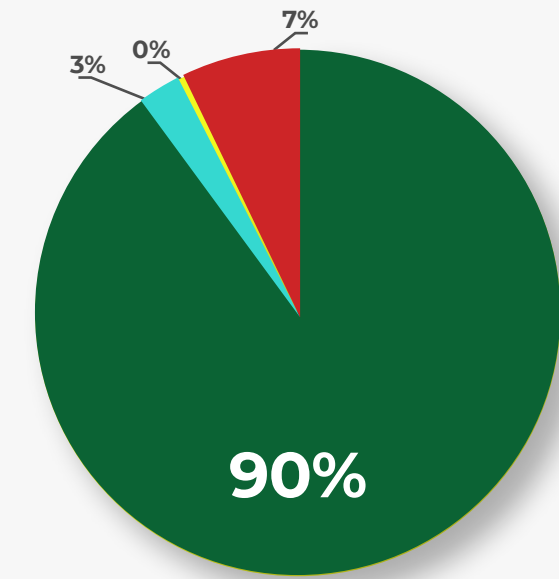
# Nutrition Program Updates

## OTP Key Performance Indicators



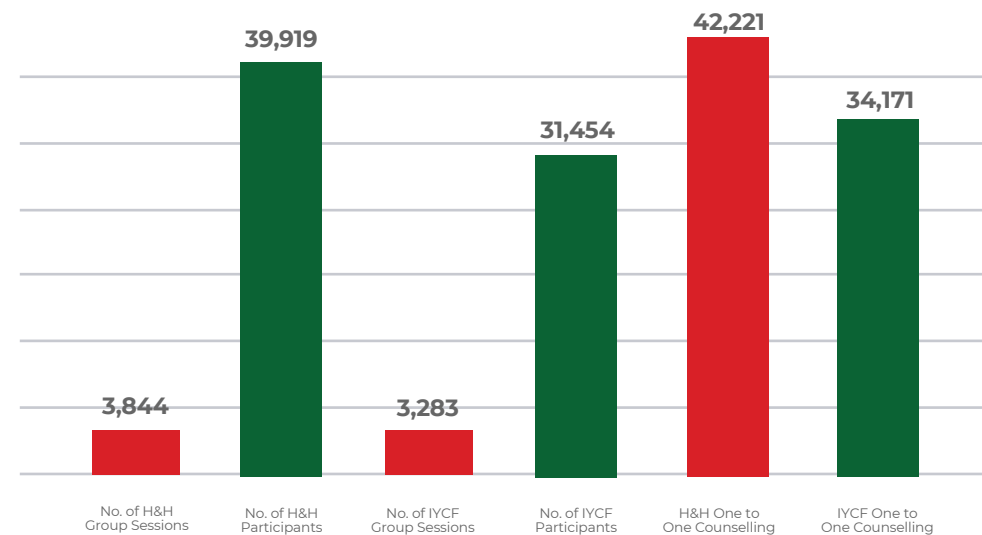
■ Cured ■ Default ■ Death ■ Non-Cured

## Nutrition Stabilization Center Performance



■ Cured ■ LAMA ■ Death ■ Medical Transfer Out

## Awareness Sessions & Participants



# Comparative Data for RHCs and Others between the months of Dec-23 and Dec-24

Comparative Data for RHCs and Others between the months of Dec-23 and Dec-24										
Indicators	RHCs and above				BHU Plus, BHU, GDs and Others				Total	
	Dec-23	Dec-24	Difference	%	Dec-23	Dec-24	Difference	%	Dec-23	Dec-24
OPD	478,363	579,943	101,580	21%	2,813,906	2,891,734	77,828	3%	3,292,269	3,471,677
FP	9,458	9,736	278	3%	89,400	92,756	3,356	4%	98,858	102,492
ANC-1	9,247	10,494	1,247	13%	50,931	53,254	2,323	5%	60,178	63,748
NVD	4,204	5,100	896	21%	27,460	29,411	1,951	7%	31,664	34,511
C-Sections	1,381	1,918	537	39%	0	0	0	0%	1,381	1,918
Lab	217,834	229,425	11,591	5%	1,125,692	910,154	-215,538	-19%	1,343,526	1,139,579
Ultrasound	24,759	23,856	-903	-4%	61,259	60,460	-799	-1%	86,018	84,316
X-ray	6,489	9,285	2,796	43%	1,706	1,655	-51	-3%	8,195	10,940